



**LAMBOO
MEDICAL**

**QUALITY
HEALTHCARE
AVAILABLE
EVERYWHERE**

SITE PLANNING GUIDE



**AGITO
Mobile CT23
Project number: 239016**



Table of Contents

1. General	1
2. Site requirements	1
3. Support Pad Requirements	2
4. Access Route & Turning Radius	2
5. Electrical Requirements.....	3
6. Radiation shielding	4
7. Telephone & Computer connection	4
8. Water connection	4
9. Tractor requirements	5

Annex: Drawing 239016-010 Loads
Drawing 239016-009 Site requirements

#	REVISION	DATE	NAME
-	First release	28-11-2023	mm

Important Notice.

The information in this document is subject to change without notice.
Lamboo Medical Europe assumes no responsibility for any errors or omission appearing in this document. Contact Lamboo Medical Europe for the latest planning information.

Lamboo Medical Europe
Michael Faradaystraat 2
2712 PR Zoetermeer.
The Netherlands.

Tel.nr. +31 79 363 83 83
E-mail: info@lamboo-medical.com
Website : www.lamboo-medical.com

1. General

This medical trailer requires specific site preparations by the operator at each desired location.

This guide contains information about the necessary preparations of the site, before placement and connections of the medical trailer.

The site must meet these requirements before the mobile unit can function properly.

2. Site requirements

The minimum area required for parking the trailer (without the tractor cab) is

Length= 16,0 m

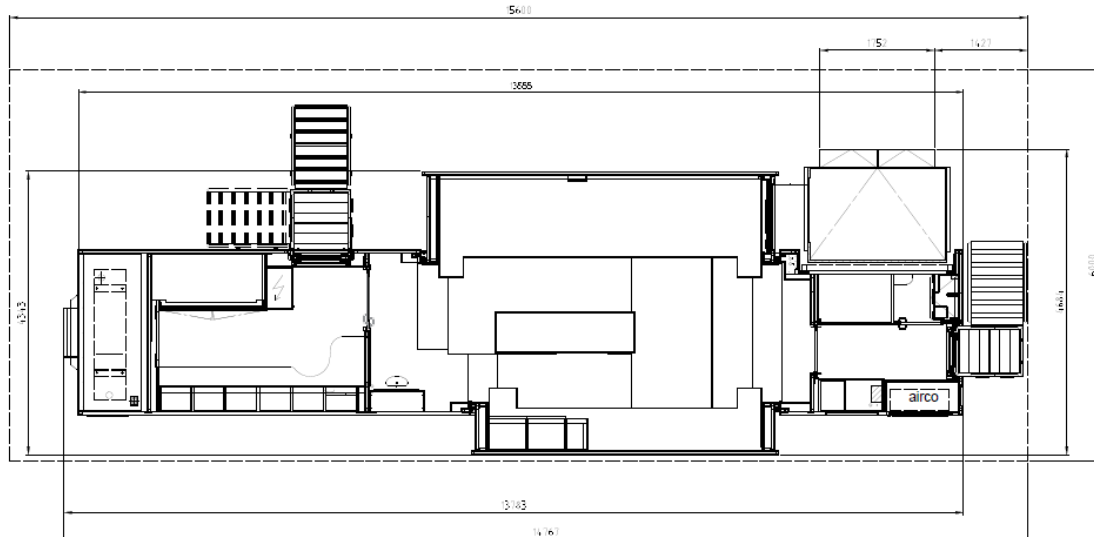
Width= 6,0 m

The ground and the access way must be clearly paved.

In order to ensure proper operation of the stabilizing system the ground must be level and the deviation must not exceed 1% (which is 0,6 degree!).

Make sure that that the patient lift, stairs and belly compartments are easily accessible for patient entry and services.

Drawing 239016-009 gives an overview of the dimensions and weight of the Mobile Medical trailer. (see appendix for full drawing).



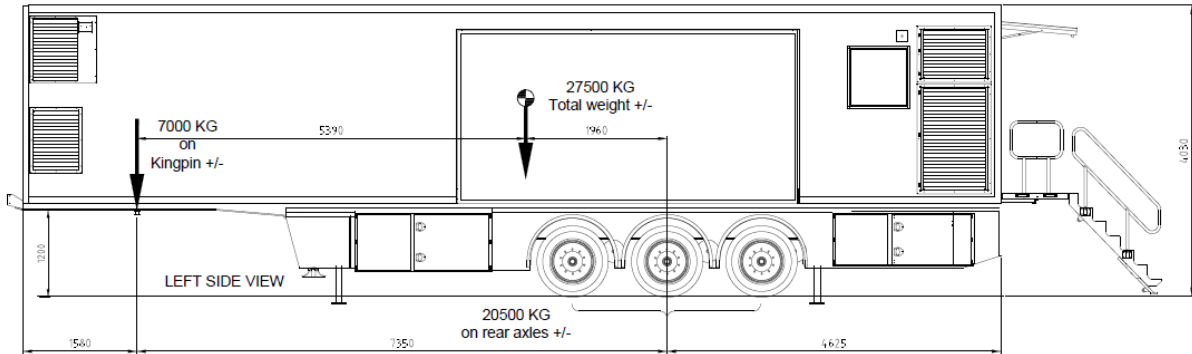


3. Support Pad Requirements

The ground and access way must be able to carry the weight of the trailer and tractor.

The weight of the trailer is approx. 27500kg.

Under the support legs must be placed a nylon support block of 0,4 x 0,4 m (delivered with the trailer). Each position must be able to carry 8500kg

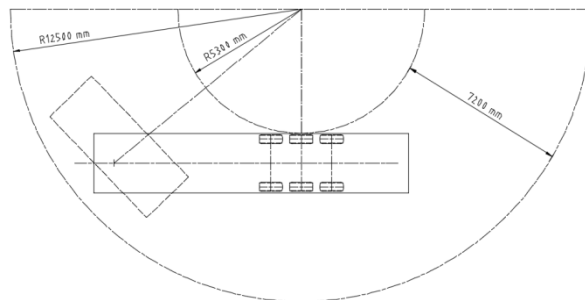


IMPORTANT NOTICE:

In order to ensure proper operation of the stabilizing system the ground must be level and the deviation must not exceed 1% (which is 0,6 degree!).

4. Access Route & Turning Radius

The access way must have a minimum width of 7,2 m. The radius of the turning circle should have an outer radius of 12,5 m and an inner radius of 5,3 m of the turning circles.



5. Electrical Requirements

The trailer is equipped with a 400 volt 3 phases 50 Hz electric system according to the TN-S system.

The site shall provide a 400 V, 50 Hz, service fused.

The trailer is protected with main fuses in the main electric cabinet:

		Fuse rate:
1.	GE CT system	200 A

The electrical phase rotation of the supply should be L1 L2 L3.

A 15 meter shoreline cable, wired directly to the trailer, is provided for connecting the mobile unit to local power.

The mains lead is not intended to withstand the wear and tear of traffic passing over it. The site shall provide necessary protective ramps, catenary systems or other means to protect the cable where it traverses roads or pathways.

The shoreline cable is provided with a with a 400 V - 250 A Marachell DS2 male connector with 2 parts:

- 1) Marachel part # 39 28 017: Inlet (male)
- 2) Marachal part # 392A 013: Handle

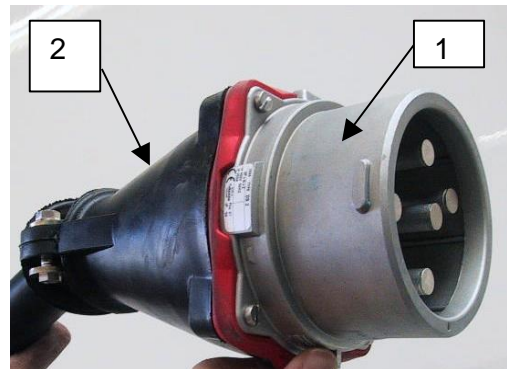
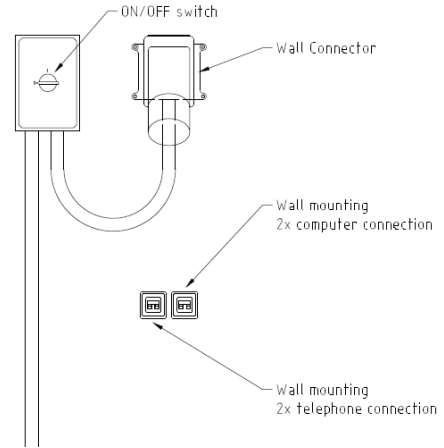
The customer facility must have the female connector to match this connector.

The electric installation must provide a dedicated medical earth terminal for connecting of the earth connection of the trailer.

This earth cable shall be connected to the trailer and the main supply outlet before the mains cable is plugged in!

WARNING:

It's the user's responsibility to verify that the shore power is electrically compatible with the connector of the mobile trailer. Connecting the power to the wrong type of receptacle could cause serious injury or damage of the medical system.



6. Radiation shielding

The trailer is equipped with a lead protection structure. Despite of this measure, low level of radiation can exist outside of the mobile unit. The trailer should be placed in an area that keeps the exposure minimal to outdoor personal and to the environment.



7. Telephone & Computer connection

The connection terminal for the data sockets is located in the left belly compartment.

In the belly compartment are several connections installed:

- 4x RJ45
- 2x Telephone to control room
- 1x Fiber optic (LC Duplex Multimode) to control room

If necessary the trailer can be connected to the hospital IT network

The site must supply cables for connecting to the IT network.



8. Water connection

The trailer is equipped with a line connection for the supply of fresh water and a drain water connection.

Connector for shore water line is GK for hose size 19 x 3 mm.

Hose with coupling is supplied with the trailer.



9. Tractor requirements

The customer is responsible for providing a truck that has the towing capacity that is sufficient for the trailer; see dimensions & weight drawing.

The coupling height of the tractor should match the coupling height of the trailer which is 1,20 m

At the front side of the trailer are the connections points to the tractor for:

- Brake system – red coupling
- Brake system – yellow coupling
- ABS/EBS system
- Lights 24V ISO N
- Lights 24V ISO S

The couplings on the tractor should match the couplings of the trailer.

