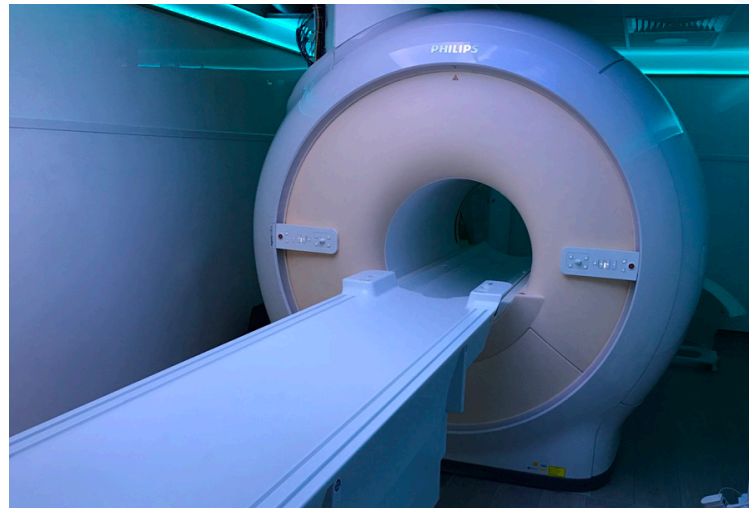


# Philips Ingenia 1.5T

Powered by the breakthrough dStream architecture, the Ingenia 1.5T is the first MR system that brings MR signal digitization where it has never been before – in the RF coil, as close to the patient as possible. dStream unleashes the power of digitization by delivering a high purity MR signal for increased SNR, combined with Imaging Space enhanced workflow and ease of use for greater efficiency in your daily operations.



## System details

System ID	MR23
System model	Philips Ingenia 1.5T
System YOM	2019
No. of channels	Digital
Software rel.	Rel. 5.6
Gantry opening	70 cm
Max table load	250 kg
Coils	Foot/Ankle 8ch., Knee 8ch., Small Extr. 8ch., FlexMedium, TotalSpine, Head/Neck/Spine, Torso, Flex Medium

## Unit details and dimensions

Type	Relocatable
Length	15,00 m
Width	4,00 m
Height	3,30 m
Weight	25.500 kg
Min. area for placement	18,00 x 8,00 m

## Unit features

Air-condition units in all rooms	✓
Coil storage cabinets	✓
Hydraulic patient lift	✓
Sound system w. CD/FM tuner	✓
IT connection in operator room	✓
Injector & Omega R5 gradients	✓
Double patient changing area	✓

## Maintenance and service

System will be delivered with a service and maintenance contract.

## Contact us

Mail: [rental@agitomedical.com](mailto:rental@agitomedical.com)  
Phone: +45 96 35 01 70