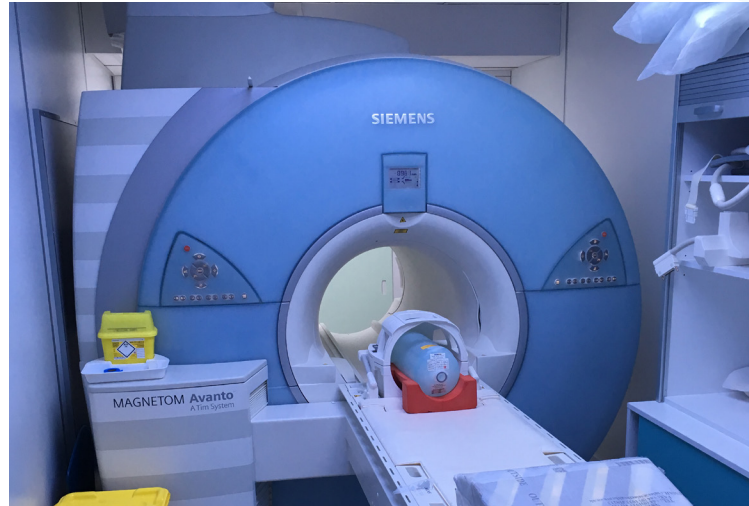


Siemens Avanto TIM 1.5T

The Siemens Magnetom Avanto 1.5 Tesla MR machine is a popular, affordable MRI scanner. Its short bore allows it to fit in tight rooms or where a compact MRI is a more effective solution. The system features syngo SPACE, which replaces time-consuming multiple 2D acquisitions with a single 3D image, allowing you to visualize very small details.



System details

System ID	MR21
System model	Siemens Avanto TIM 1.5T
System YOM	2008 (upgr. 2016)
No. of channels	18
Software rel.	Syngo MR B19
Gantry opening	60 cm
Max table load	250 kg
Coils	CP Extremity, Shoulder Small+Large, Flex Small+Large 4ch., Loop Large, 2xBody Matrix, Neck Matrix, Head Matrix, Spine Matrix, Knee 8ch., Breast Matrix

Unit details and dimensions

Type	Relocatable
Length	14,00 m
Width	3,00 m
Height	3,20 m
Weight	22.000 kg
Min. area for placement	15,50 x 7,00 m

Unit features

Air-condition units in all rooms	✓
Coil storage cabinets	✓
Sound system w. CD/FM tuner	✓
IT connection in operator room	✓

Maintenance and service

System will be delivered with a service and maintenance contract.

Contact us

Mail: rental@agitomedical.com
Phone: +45 96 35 01 70